

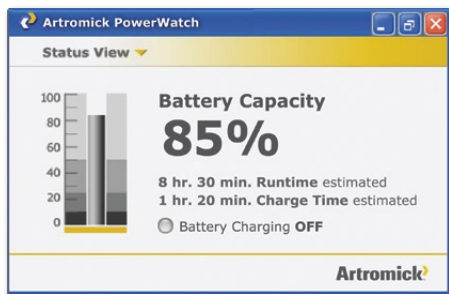
PowerWatch™ Power System Monitoring Software

Artromick Mobile Computing Solutions

Artromick PowerWatch™ Monitoring Software gives the facility IT and clinical teams a real-time and ever-present view into the power system health of their mobile computing carts.

- Empowers your facility with the tools necessary to effectively manage the mobile computing cart fleet and minimize power system issues
- Supports an environment to ensure optimized cart uptime
- Extends battery life and product value by preventing deep discharge
- Signals the computer to systematically start the Shut Down process before the battery discharges to 0%
- Power system use history provides insights to help create recharging best practice protocols
- Simply and clearly communicate with Artromick Technical Support to discuss, diagnose, trouble shoot, and review power system performance issues

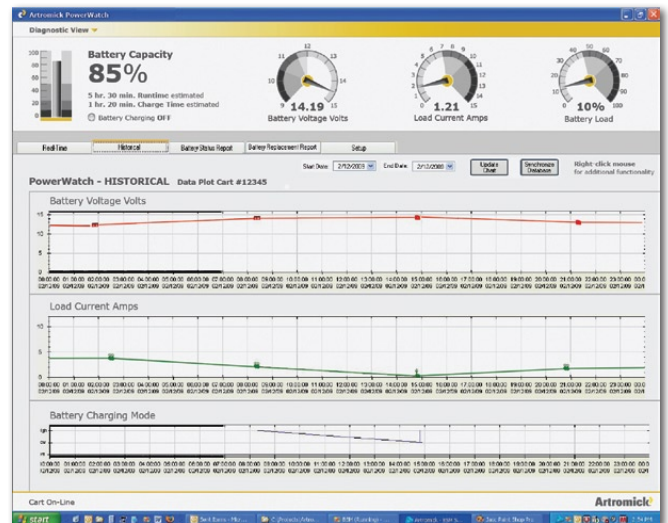
Power System Status View



The PowerWatch™ Status View gives the cart user a quick view of the power system battery status. This intuitive indicator provides key information including:

- On-Screen View of power system stats to illustrate percentage of estimated battery power remaining, run time remaining, and time required to fully recharge system
- On-Screen Charging Indicator to clearly communicate whether the cart is recharging
- Low Battery Status Alerts can be set to appear or speak in either English or Spanish

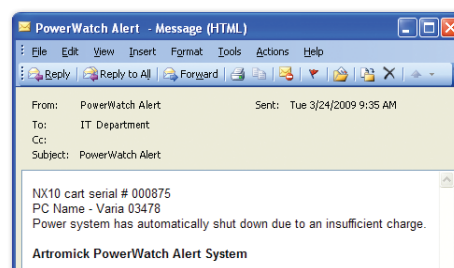
Power System Diagnostic View



The PowerWatch™ Diagnostic View gives your facility the insight to understand how the mobile computing cart is using power. Using the Diagnostic View provides information through an array of features including:

- Real-time view of power usage:
 - Provides real-time graphing of voltage available, load currents, and system charging
- Historical view of power usage and charging practices:
 - Provides historical view into battery voltage available, load currents, and system charging events in a customizable time frame trending from weeks, to minutes, to seconds
- Battery Status Report provides a detailed view of each battery event
- Battery Replacement Report offers a historical log of battery exchange events

Email/Text Message Notification



Sends an e-mail or text message alert when a mobile computing cart is reaching a critical power system discharge level.